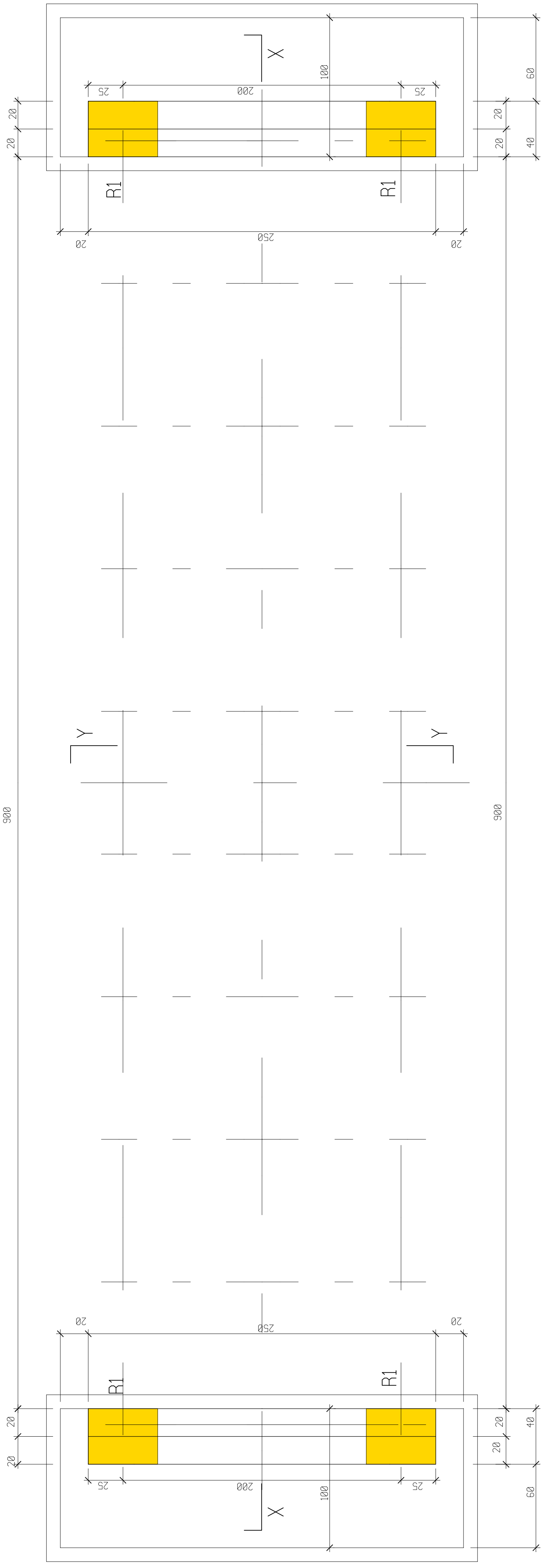
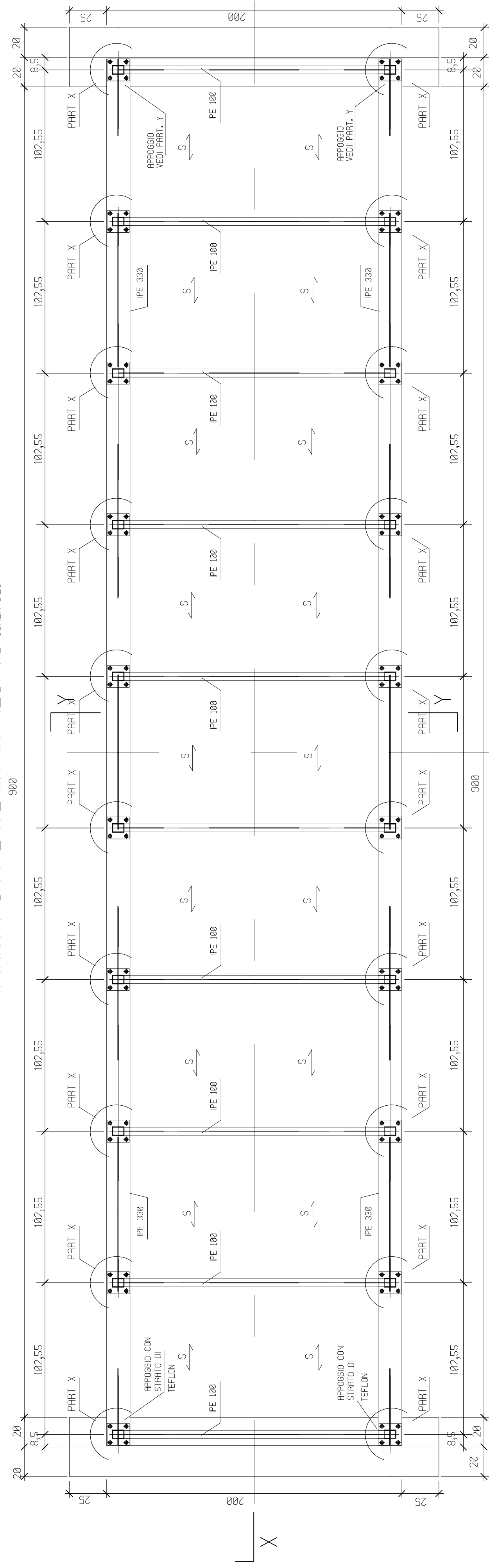


PIANTA FONDAZIONI SCALA 1:20



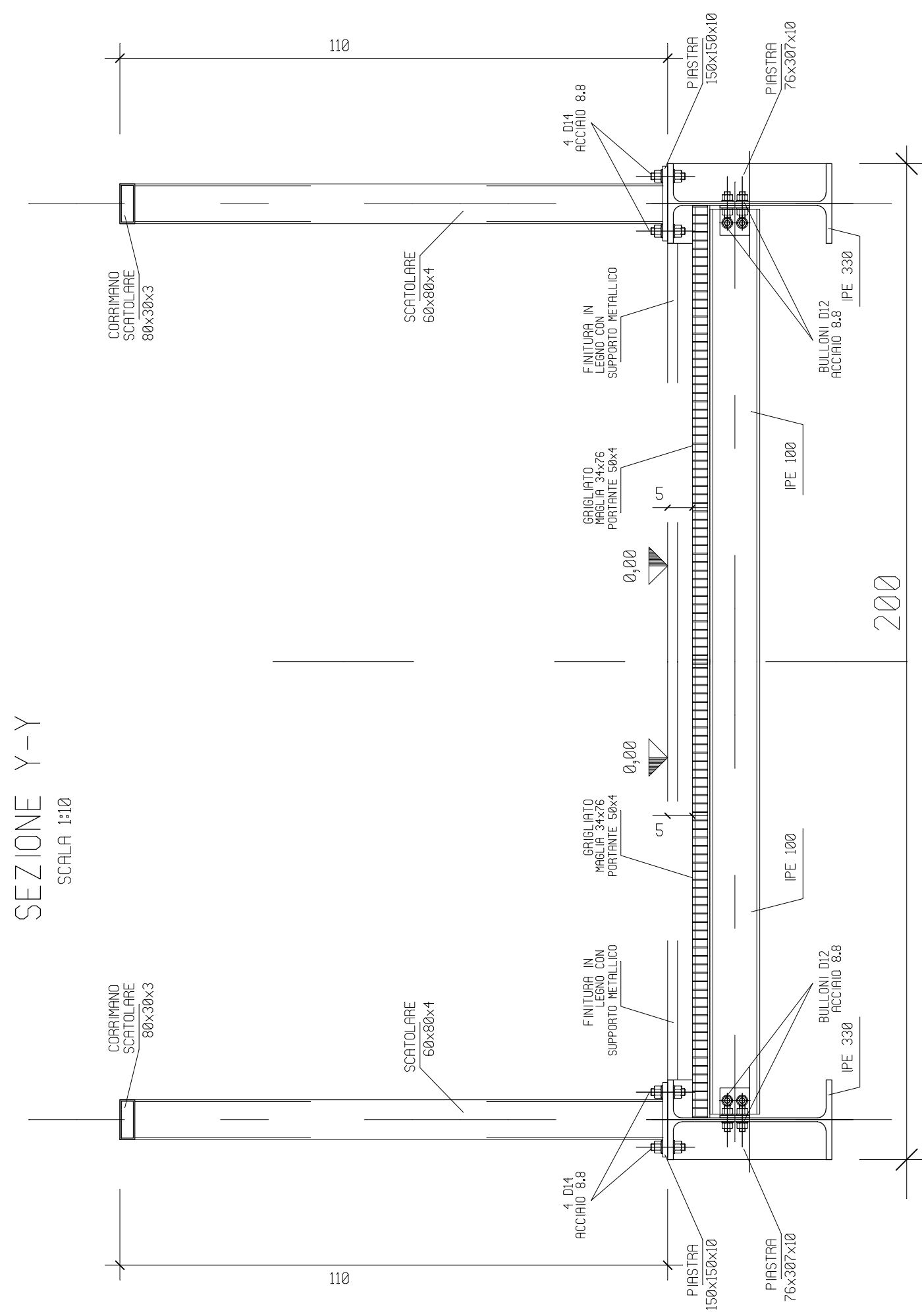
PIANTA CARPENTERIA IMPALCATO SCALA 1:20



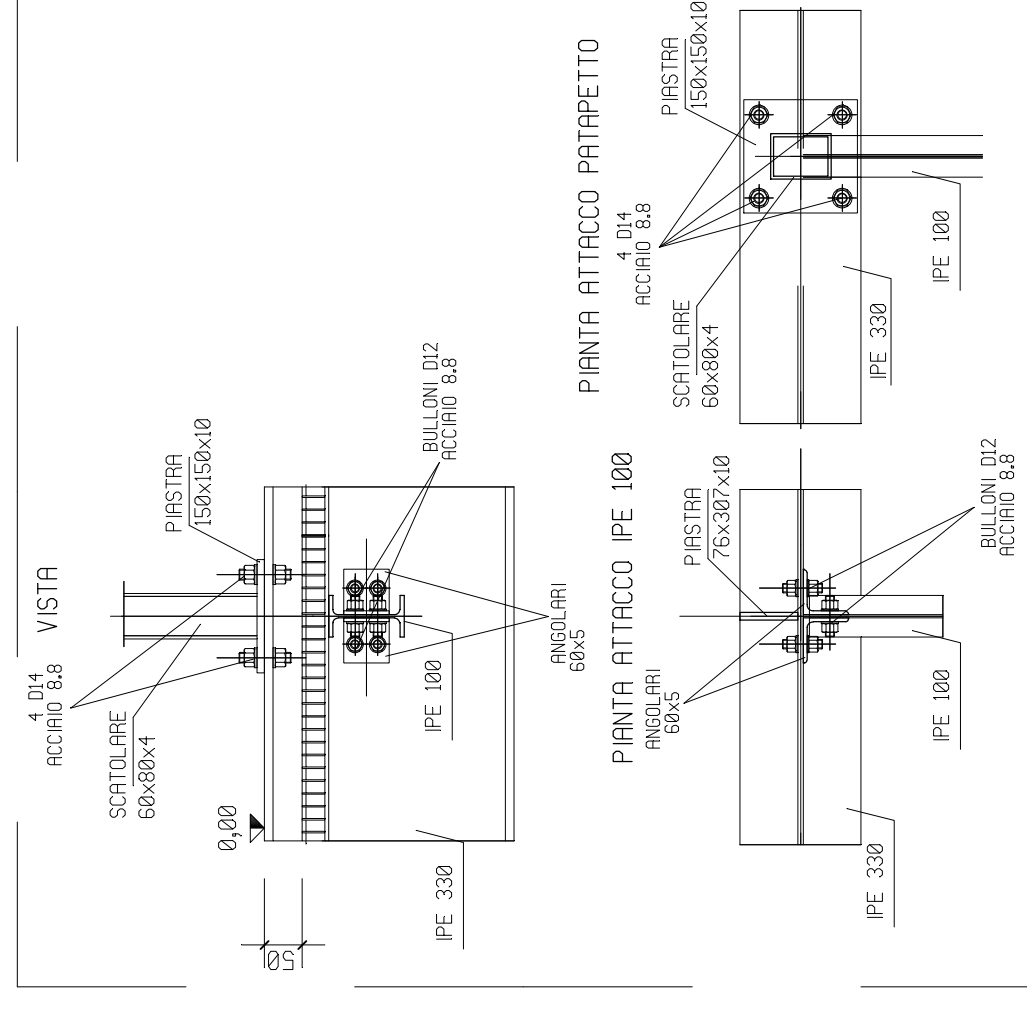
S GRIGLIATO PORTANTE

CARICO ACCIDENTALE	500 dn/mq
CARICO PERMANENTE	100 dn/mq
TOTALE	600 dn/mq

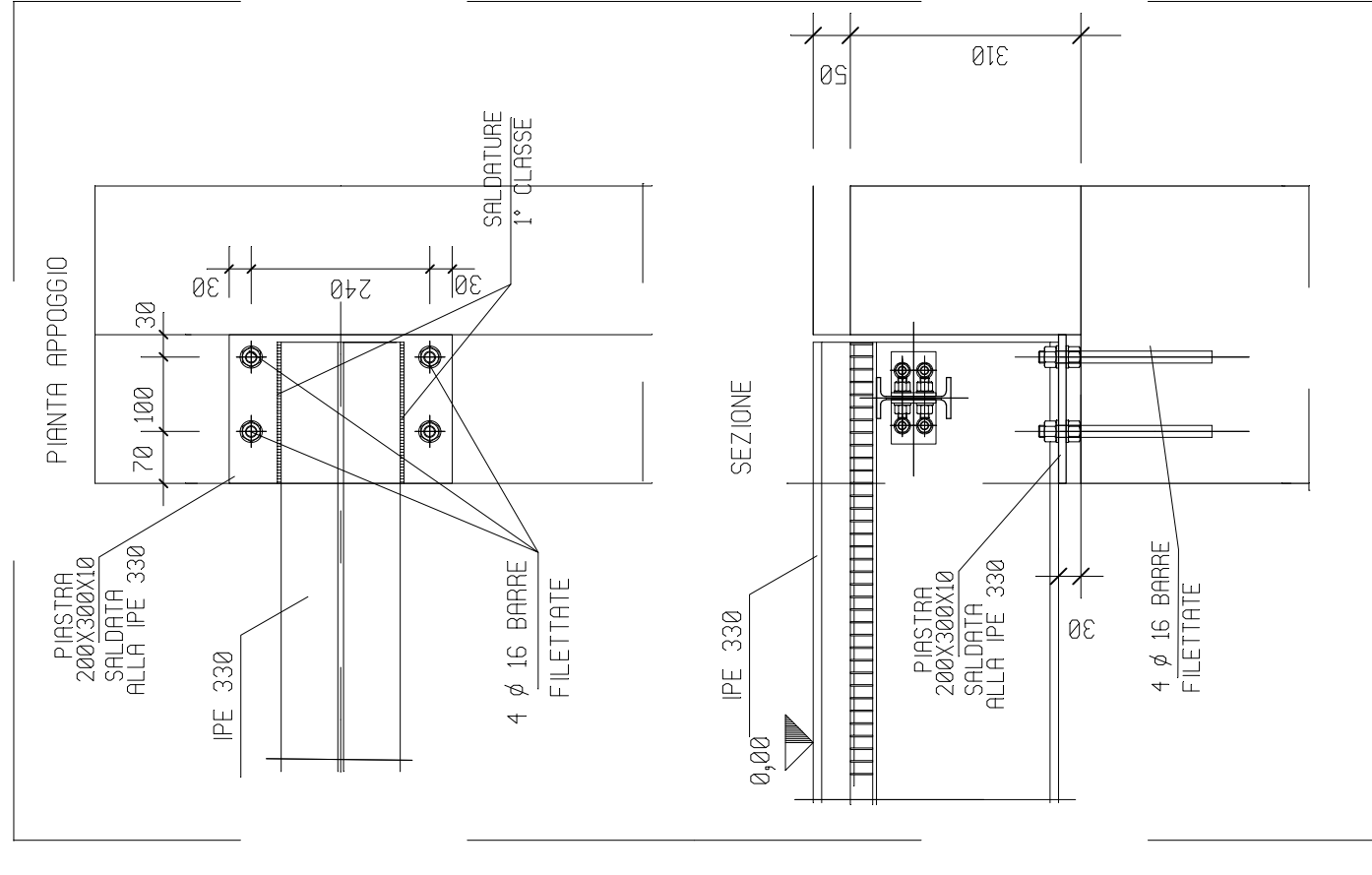
SEZIONE Y-Y



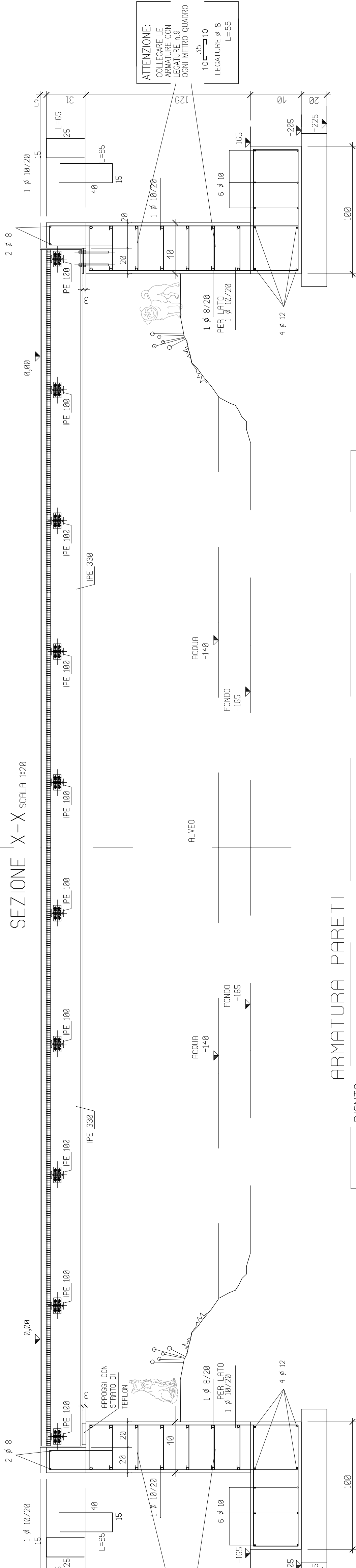
PARTICOLARE X SCALA 1:0



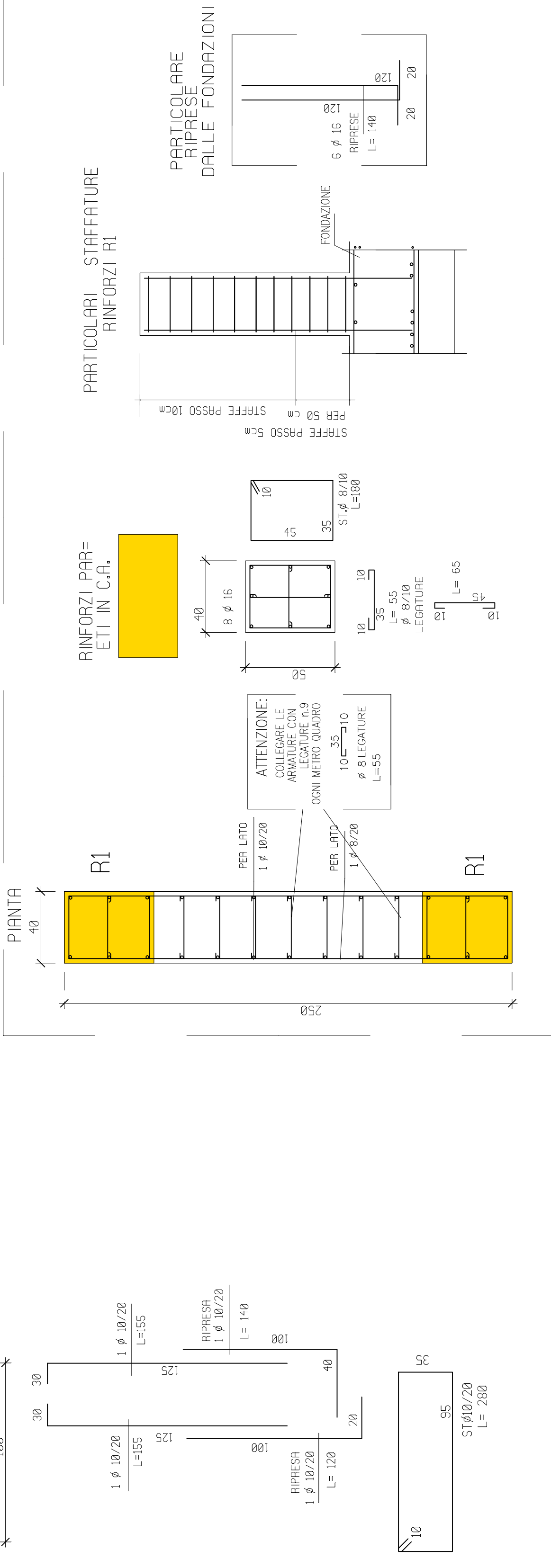
PARTICOLARE Y SCALA 1:0



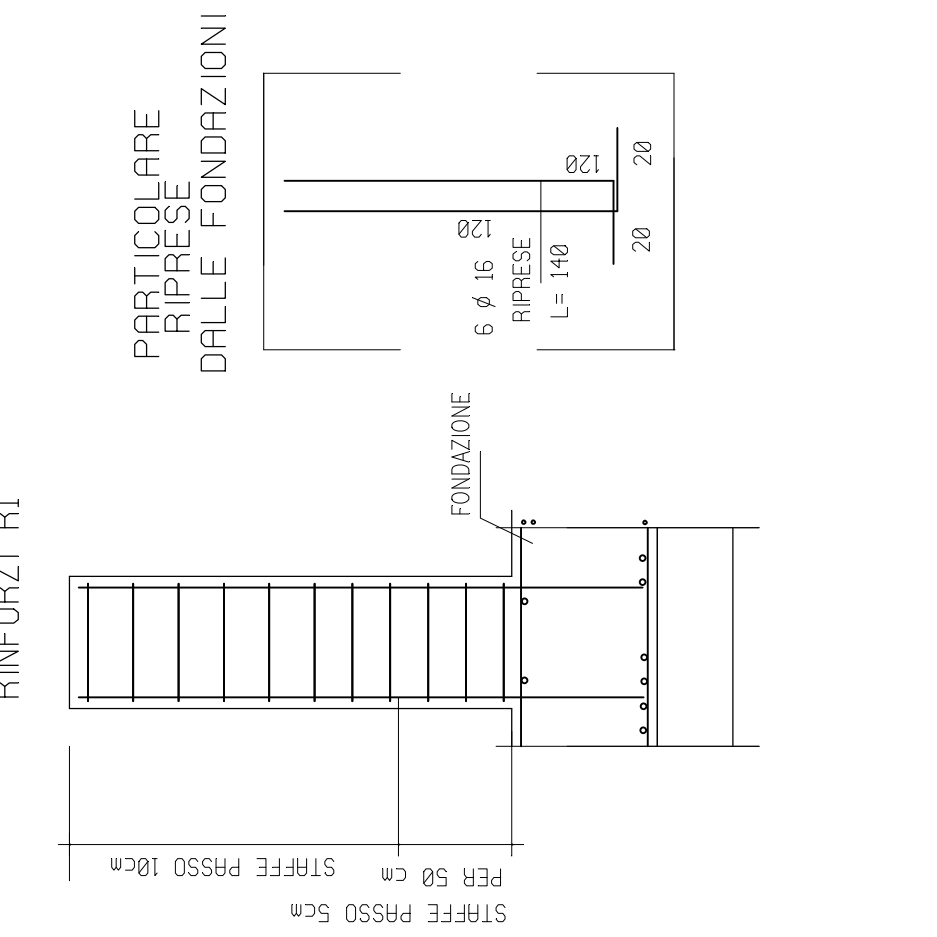
SEZIONE X-X SCALA 1:20



ARMATURA PARETI



PARTICOLARI STAFFATURE



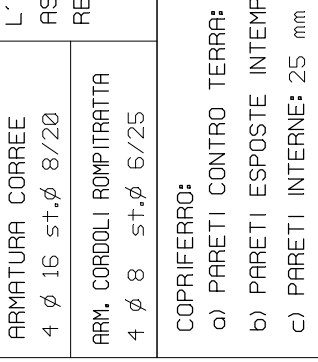
STRUTTURE METALLICHE

ACCIAIO:	S275 ( ex Fe 430 )	f <sub>yk</sub> (N/mm <sup>2</sup> )	275	f <sub>yk</sub> (N/mm <sup>2</sup> )	430
BARRE FILETTATE:	classe 8,8				
DADO:	classe 8				
SALDATURA:	secondo norme UNI EN ISO 4863/2001				
ANCORAGGIO CHIMICO:	HILTI HIT-HY 2000				
BARRE CAROTATURE:	PROFONDITA' mm	COPIA SERR. Nm			
	φ 16	φ 18	168	138	
	φ 14	φ 16	140	88	
	φ 12	φ 14	128	58	

CEMENTO ARMATO

ARMATURA CORREE	L'IMPRESA DEVE ASSICURARE LA RESISTENZA CUBICA
ARM. CUBICI SOTTOPRINTA	CLASSE DI RESISTENZA: C25/30 (min.30 N/mm <sup>2</sup> )
COPRIFERRO:	CLASSE MINIMA DI CONSISTENZA: S4 - (FLUIDA)
	CLASSE MINIMA DI CONSISTENZA: S4 - (FLUIDA)
	APPORTO RAC < = 0,55
	RECUP. BSRG. ad aderenza migliorata (ex F4tk contr.)

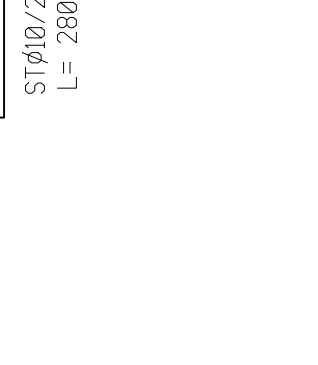
REINFORZI PARETI



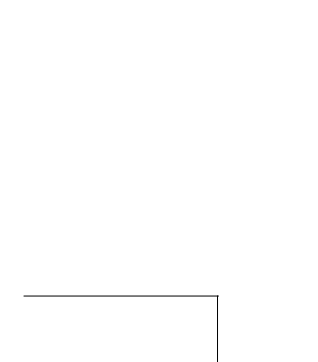
REINFORZI PARETI



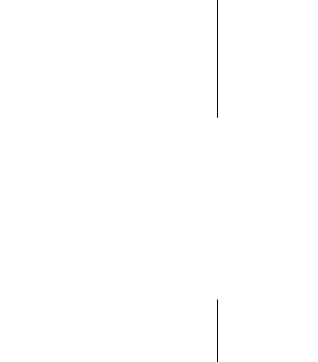
REINFORZI PARETI



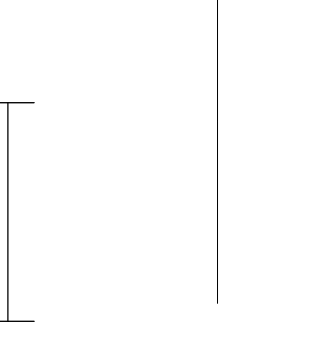
REINFORZI PARETI



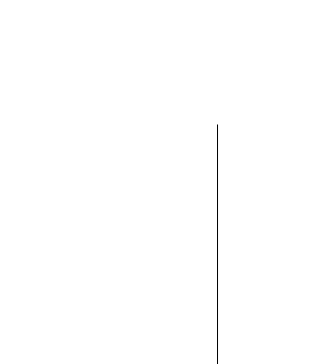
REINFORZI PARETI



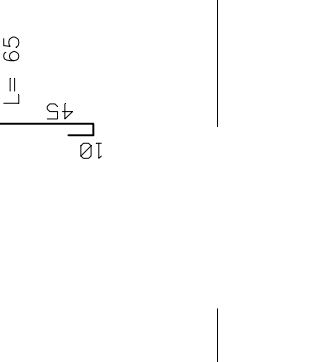
REINFORZI PARETI



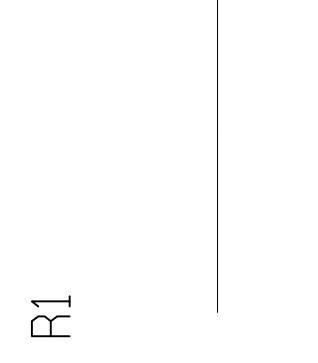
REINFORZI PARETI



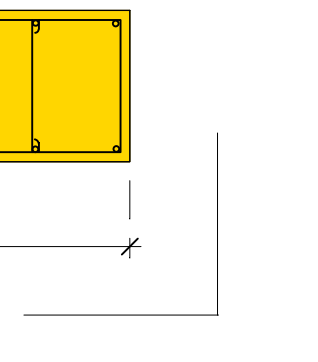
REINFORZI PARETI



REINFORZI PARETI



REINFORZI PARETI



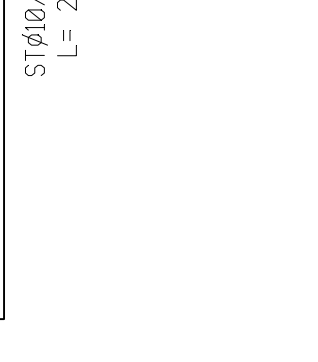
REINFORZI PARETI



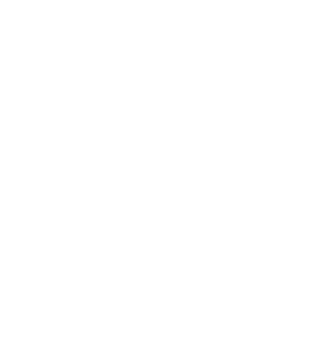
REINFORZI PARETI



REINFORZI PARETI



REINFORZI PARETI



REINFORZI PARETI

